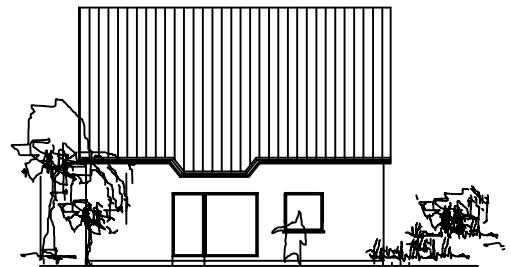
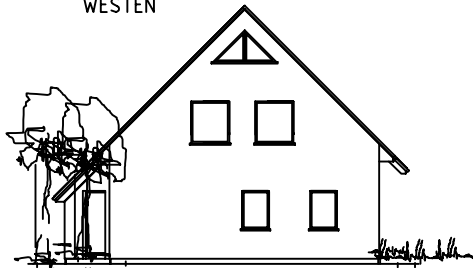


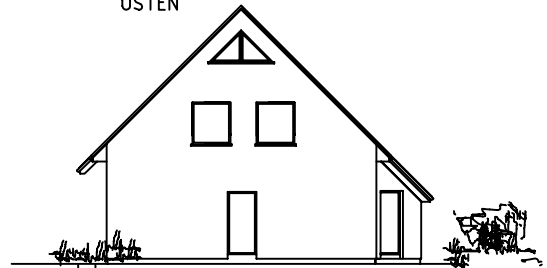
WESTEN



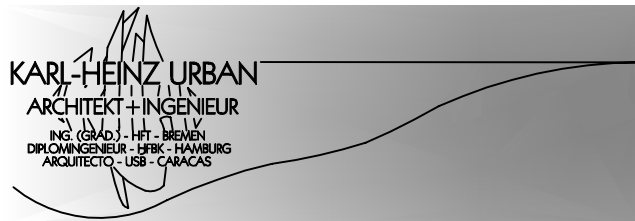
OSTEN



SÜDEN



NORDEN



FREISCHAFFENDER ARCHITEKT + BERATENDER INGENIEUR

HQ / POST / CORREO: PFARRSTR. 121 - 10317 BERLIN - CU ATT OF: FRANZ-MEHRING-PLATZ 1 - OF 626 - 10243 BERLIN
 FON +49 30 54719463 - FAX +49 30 54719515 - +49 30 5541005 - CEL FON - +49 175 3659995
 CONT OF: BREMERHAVENER STR. 25 - 28217 BREMEN

SUBS: URBAN HABITAT C.A. - STA. TERESA DEL TUY - EDO. MIRANDA - VENEZUELA - FON +58 2392315425
 KH_URBAN@HOTMAIL.COM - WWW.KARLHEINZURBAN.DE

TYPENHAUS STANDARD CLASSIC 120 M2

LAGE IDEALE HIMMELSRICHTUNG ----->



BAUTEIL
 ÜBERSICHT

BLATT #
 A-1000-B/L

SCHL 0820 SGE BLATTGRÖSZE

M 1:250

GEZ KHU

A 4